

Version 1.02

(30.05.2017)

Installation manual

Complete set active Sound incl. Soundbooster BMW 1er E82 123d

Artikel no. 40570



Content

General advice	2
Safety Instructions	3
References of legal regulations for operation	3
Notes.....	4
Scope of delivery 40570	4
Installation instruction	5

General advice

While developing this product, your personal safety combined with the best operating service, modern design and an up-to-date production technique was especially taken into account.

Unfortunately, despite the utmost care injuries and/or damages might occur due to improper installation and/or use.

Please read the attached instruction manual completely with great care and keep it!

All articles of our production line pass through a 100 % check - for your safety and security.

We reserve the right to carry out technical changes which serve the improvement at any time.

According to each article and purpose, it is sometimes necessary to check each country's legal regulations before installing and starting the unit.

In case of guarantee claims, the device has to be sent back to the seller in the original packaging with the attached bill of purchase and detailed defect's description. Please pay attention to the manufacturer's return

requirements (RMA). The legal warranty directions are valid.

The guarantee claim as well as the operating permission becomes invalid due to:

- a) unauthorized changes to the device or accessories which have not been approved or carried out by the manufacturer or its partners*
- b) opening the device's frame*
- c) device's repairs carried out by one's own*
- d) improper use / operation*
- e) brute force to the device (drop, wilful damage, accident etc.)*

During installation, please pay attention to all safety relevant and legal directions. The device has only to be installed by trained personnel or similarly qualified people.

Please limit on installation or function problems the troubleshooting to 0.5 hours for mechanical and 1.0 hours for electronic works.

To avoid unnecessary work and to save costs, please send us immediately via the contact form Kufatec (<http://www.kufatec.de/shop/de/infocenter/>) a request to our technical support.

Please quote the following necessarily:

- Vehicle Identification Number
- Part number of the retrofit kit
- Detailed description of problems
- Already conducted operations

Safety Instructions

Installation requires special knowledge.

Do not install the unit yourself. For safe and reliable installation, consult a dealer having special knowledge.

- *Never use bolts or nuts from the car's safety devices for installation. If bolts or nuts from the steering wheel, brakes or other safety devices are used for installation of the unit, it may cause an accident.*
- *Use the unit with a DC 12V negative ground car. This unit cannot be used in large trucks which use a DC 24V battery. If it is used with a DC 24V battery, it may cause a fire or accident.*
- *Avoid installing the unit in following places: - Where it would hinder your safe driving. - Where it could damage the car's fittings.*
- *This unit is only for use in the following vehicles. Only connections described within this instruction guide are allowed or required to use for installation.*
- *For damage impact caused by faulty installation, unsuitable connections in appropriate vehicles Kufatec GmbH & Co. KG assumes no liability.*
- *We advise you that these units process data out of the MOST - protocol from the vehicle. As the supplier of this device we don't know the overall system you are working with. If our device causes damage due to other changes made by to the vehicle Kufatec GmbH & Co. KG assumes no liability.*
- *Kufatec GmbH & Co. KG supplier do not guaranty the use of the product for changing's within a new vehicle series.*
- *If the car manufacturer's don't agree with the installation of our device by reason of warranty the Kufatec GmbH & Co. KG assumes no liability. Please check conditions and warranty before you begin the installation.*
- *Kufatec GmbH & Co. KG supplier reserves the right to change the device specifications without notice.*

NOTE: The road traffic has to have your full attention.

Telephone operations should only be done by suitable traffic and weather situations. The volume need to be set that you are still able to realise acoustic warn signals (Police, fire brigade).

- *Errors and changes excepted.*

References of legal regulations for operation

Only use this unit in the intended domain.

If you use it in a foreign domain, if the unit is not installed properly, or if the unit will be reconstructed, the guarantee will expire.

Notes

Note: The use of a sound booster is not permitted without registration in the vehicle papers, in the area of the German StVZO. The noise emission of the vehicle is increased by this retrofit. The regulations of the StVZO must be observed. It is therefore recommended to ask for a specific registration option at the responsible TÜV/DEKRA office before retrofitting. Outside Germany, please observe the laws on vehicle licensing applicable in your country.

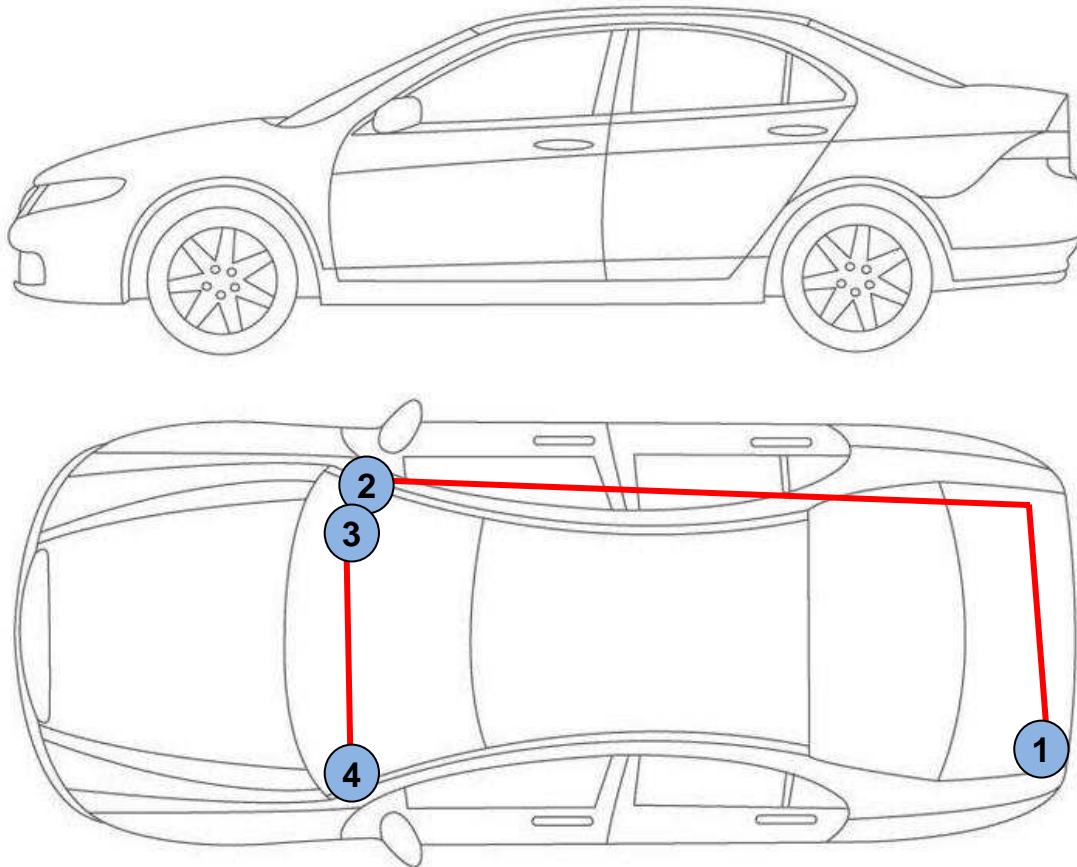
Note: At first please check if the sound generator can be installed at the described position. If there is no space please interrupt the installation and contact our technical support. Don't continue with this installation, until this issue is clarified.

Scope of delivery 40570

- Control unit for engine sound generation
- External Sound generator incl. mounting plate
- Sound Booster Pro (Modul)
- Wiring set

Installation instruction

The diagram below shows the wiring and the position of the individual components.



Scheme

- 1 – External Sound generator incl. mounting plate
- 2 – Control unit
- 3 – Sound Booster Pro-Modul
- 4 – Button

Remove the carpet at the passenger's foot space as well as the covering underneath the dashboard, Fig. 1. Therefore it is necessary to remove the kicking plate, Fig. 2.

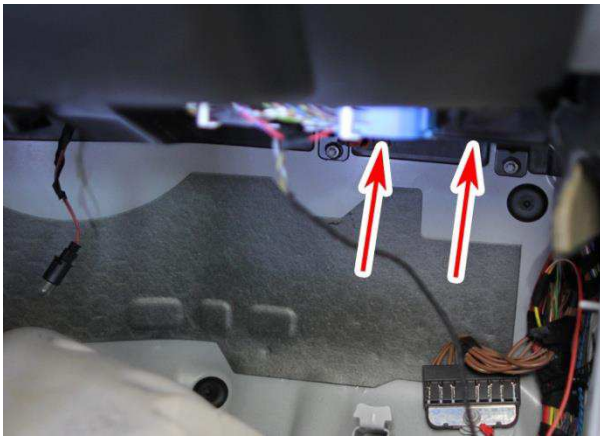


Fig. 1

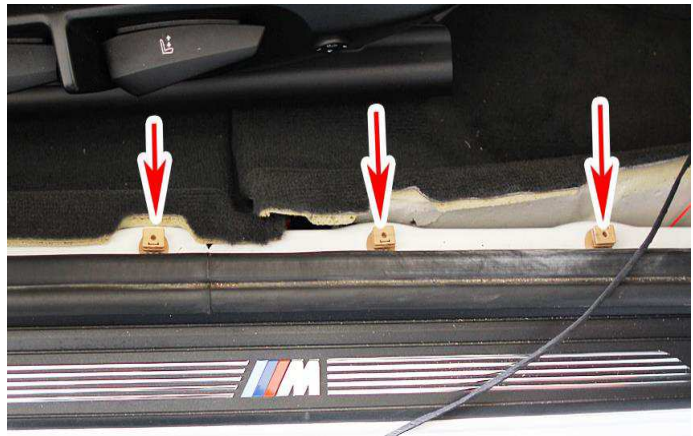


Fig. 2

Connect the CAN lines with the blue plug of the airbag control unit, as shown below, Fig. 3.

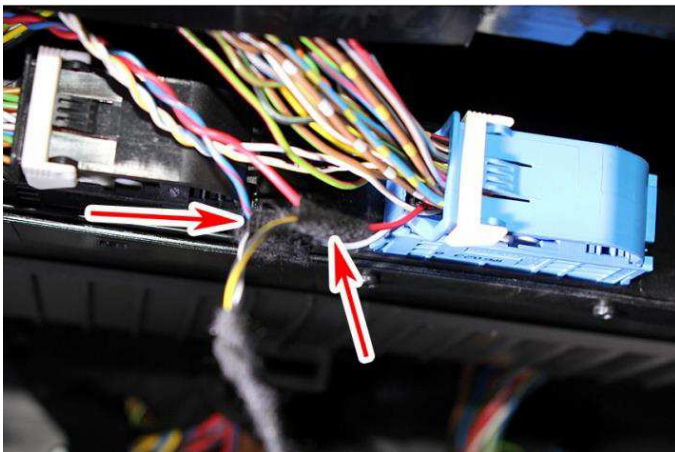


Fig. 3

CAN High (black/white)	-	cable color (at blue connector) = blue/red
CAN Low (black/yellow)	-	cable color (at blue connector) = red

isolate the connections afterwards.

Connect the ground cable (brown). A suitable ground point is located in the passenger's foot space, Fig. 4. Connect the cable for ignition lead (red/white) with the yellow/green cable of the harness, located at the right A-Column, Fig. 5. Isolate the connections afterwards. Secure the line with a 7,5A fuse. Pls. check this connection by measuring the voltage!

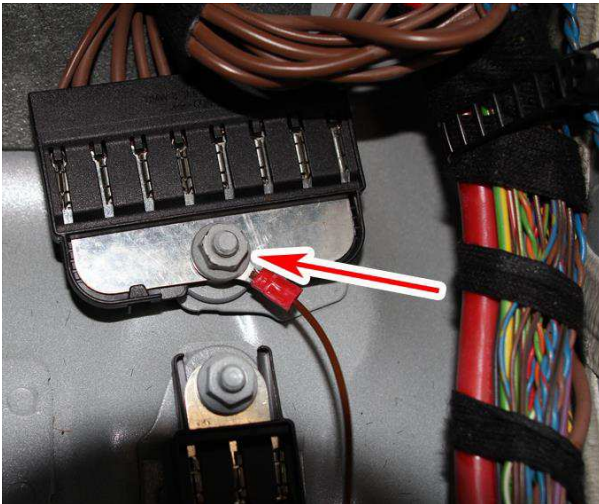


Fig. 4

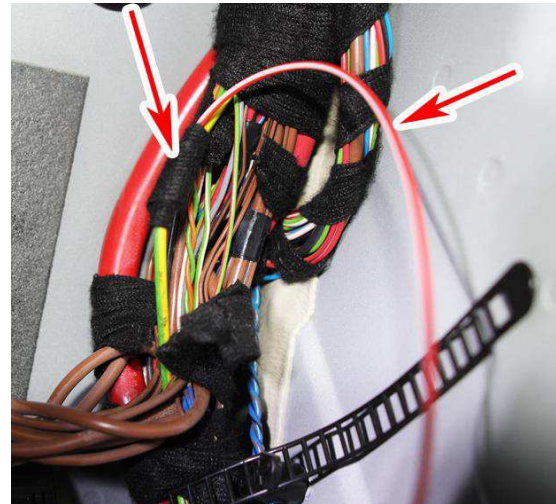


Fig. 5

Connect the control units and mount them underneath the dashboard with suitable fixing material, Fig. 6.

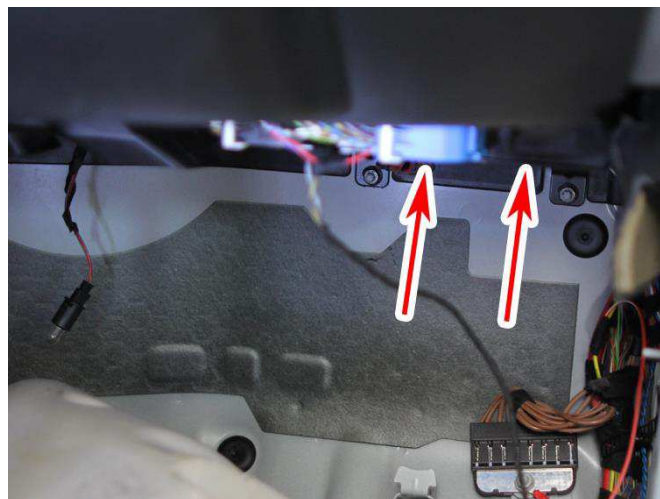


Fig. 6

The wiring is done on the passenger's side, Fig. 7 and 8.



Fig. 7

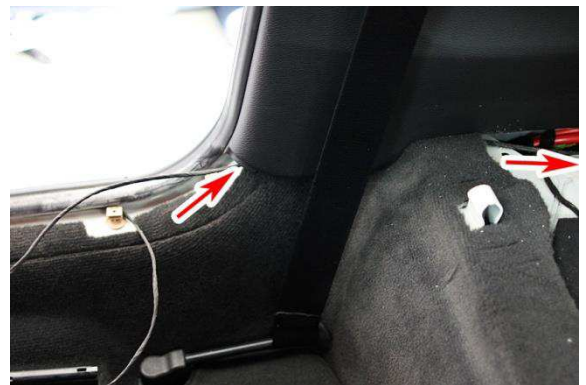


Fig. 8

Now lay the wiring below the backrest, Fig. 9, over the rear right wheel house (using a pulling through aid), to the luggage compartment, Fig. 10.



Fig. 9

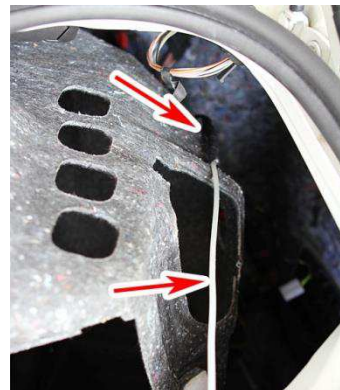


Fig. 10

Remove the top cover of the tail plate and lay the wiring from the left to the right side of the vehicle, Fig. 11 and 12.



Fig. 11



Fig.12

The laying to the external sound generator can be found in Fig. 13 and 14. Remove the sealing and pass the wires through the hole. Seal the cable inlet after that.

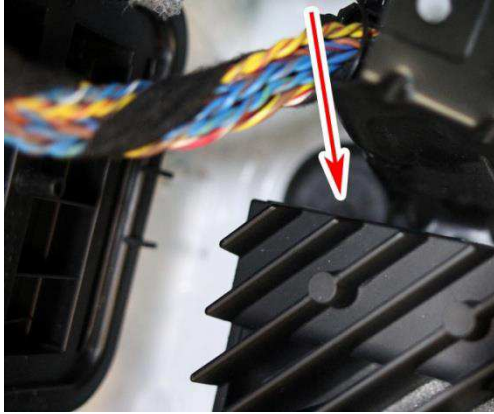


Fig. 13



Fig. 14

Remove the tailpipe cover and rear visor, Fig. 15 and 16.



Fig. 15



Fig. 16

Mount the external sound generator together with the tailpipe cover, Fig. 17, 18 and connect the generator with the associated cable, Fig. 17.

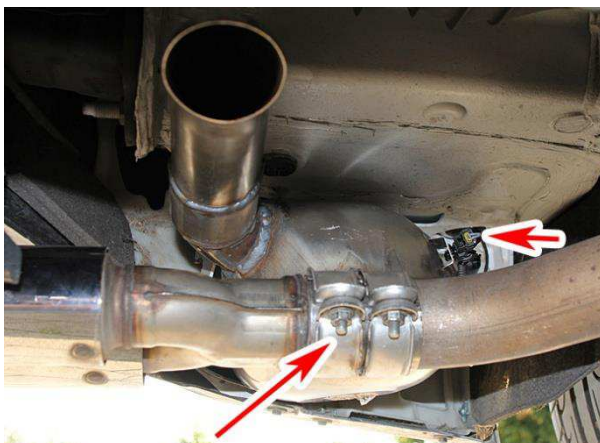


Fig. 17



Fig. 18

As an additional safeguard the included steel cable and associated clip must be attached to the sound generator and at a suitable location on the vehicle. This is an additional security, in case of losing the fixing screw by vibrations.

For attaching the sound generator use suitable screws which can withstand a high load. To avoid losing the screws by vibrations, secure the screws with suitable workshop material. Check periodically the stability of the noise generator and tighten the screws if necessary. In the case of a non-compliance, we assume no liability for any damages.

Finally, the wiring for the push button have to be layed. Use a pulling through aid and lay the wiring from the right foot space to the center console and then to the left foot space, Fig.19. We recommend to mount the push button underneath the dashboard, on a hidden position.

ATTENTION: For drilling you need a 7mm drill!

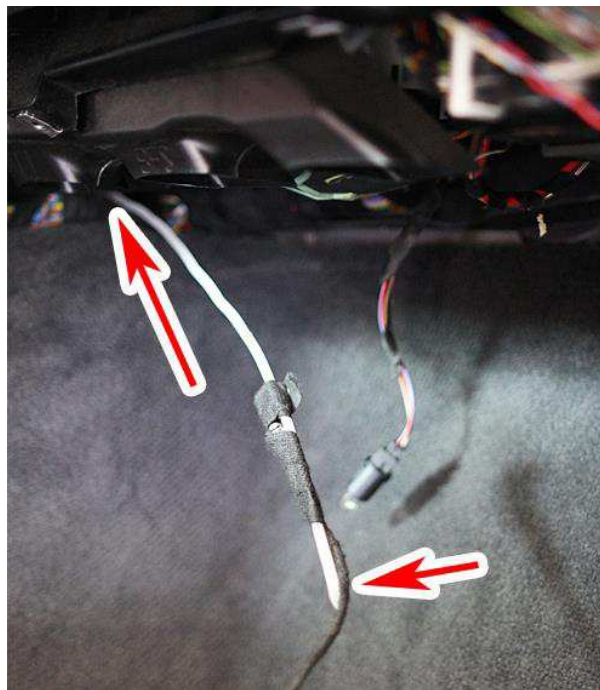


Fig. 19

The re-assembly takes place appropriately in a backward sequence.

You can choose 6 profiles by using the supplied button - in level 1-3 you will hear a decent sound, in level 4-6 a powerful V6/V8 sound.